



The Fitzroy Academy

Residential Special School Prospectus

enquiries@newreflexions.co.uk

Head Teacher's Welcome

The Fitzroy Academy is a Residential Special School providing high-quality personalised education and care for children, a number of whom live on site in our registered Children's Home.

We believe that every child has the right to an education that equips them for future independence, learning and life and as such we set ambitious, yet realistic targets for all our children.

Our well qualified, experienced and passionate staff team work together to make our residential school a successful and happy community. We offer a rich, varied and stimulating curriculum, which embraces creativity and opportunities for outdoor learning. The facilities on site support the curriculum and include a gym, food technology room, clay workshop and art room. There are also opportunities for outdoor learning in the beautiful grounds, outdoor classroom and our own wooded area on site. Timetables are individualised and tailored to ensure children are making progress and receiving the required levels of both educational and therapeutic input. All children have access to support offered by the therapy team who are based at the Academy.

The residential school offers a nurturing environment where staff know all children allowing them to thrive and achieve their full potential. We understand that success may look different for individual child. This will be recognised and individual achievements rewarded. Children will be encouraged to participate in a wide range of activities that enrich their spiritual, moral, social and cultural development enhanced by school trips, workshops, charitable work, community outings and PSHE lessons.

School and care work closely together offering a 24hr curriculum across both settings. There is a multi-disciplinary team in place where regular meetings take place to ensure a consistent approach for each individual child who live within our homes.

We hope this prospectus will give you some sense of the residential school's vitality, vision and values. You are welcome to make an appointment to visit us during the school day.

We very much look forward to meeting with you.



Lydia Swinton (Head Teacher)

The Fitzroy Academy
01939 210040

Mike Pearce (Head of Care)



Our Mission

‘Learning to be the best that we can be’

Our mission statement truly permeates every aspect of school life and influences all we do. All staff have aspirational expectations for all children and we are committed to educational stability and progress.

The Fitzroy Academy, part of the New Reflexions family, creates a nurturing atmosphere where all children are known to everyone and know everyone. Everyone is treated as an individual and the New Reflexions philosophy, “If it isn’t good enough for your own child, it isn’t good enough”, is palpable in everyday school life.

We work tirelessly to remove barriers to learning. Our small, highly supportive environment enables school staff to know each child well. Teachers and teaching assistants work collaboratively with parents/carers, the young person and other professionals to create a person-centred, functional, engaging and appropriate educational and personal development programme within our inclusive environment.

Every child will be engaged in a learning programme that is appropriate to meet their needs, age and ability taking their interests and skills into account. Literacy, Numeracy and independent living skills remain at the core. Students have the opportunity to follow a range of accredited courses.





The School and Residential Setting

The Fitzroy Academy is a Residential Special School. Fitzroy offers a number of different services and provides safe and therapeutic care for children and young people with a range of learning disabilities including (but not limited to) children with Autism, Global Development Delay, ADHD, Downs Syndrome and communication difficulties. This includes:

- Providing care and education for children aged 7-18.
- Residential places for between 39 and 52 weeks of the year
- Day student places
- A variety of short break services available for children from 5 years of age.
- On site Clinical team

Set in the beautiful county of Shropshire and located outside of the historic town of Shrewsbury, the Fitzroy Academy is located in the grounds of a Georgian manor house in the small village of Cruckton, with views over the Shropshire hills.

The school and residential homes provide large spacious rooms with multiple areas for children to be able to learn and grow. We also have a fully equipped sensory building with both stimulation and low arousal environments, ensuring there is something for all.





The Fitzroy Academy short breaks provision

Elizabeth House can accommodate up to 3 children and will be utilised for short breaks, this will either be for children who currently go to our school or from further afield.

We are able to support younger children in our short break service, supporting children from the age of 5 to 18 years in our separate accommodation.

We provide a safe environment for everyone who stays with us, where children partake in a wide range of activities whilst being supported by an experienced passionate staff team.

Our short breaks provision will be supported by a multidisciplinary team of trained professionals who will be involved in assessment of risk, training for teams and development of communication passports, social stories and associated resources.



Lydia Swinton (Head Teacher)

The Fitzroy Academy
01939 210040

Mike Pearce (Head of Care)



School Admissions

Admission into the school is through a referral for a placement with New Reflexions. The school provides a holistic package of residential care, education and therapeutic support.

We welcome referrals to the school at any time during the academic year. Referrals may come in different ways:

- As part of a residential package provided with New Reflexions - Placements will be on a full-time basis for 39 or 52 weeks of the year
- Via a Placing Authority through a referral for a short break service (without education)
- Via a Local Authority through a consultation process as a day student

School Admissions criteria

- Children must be aged between 7 and 18 years to attend the school (Y3 – Y13)
- Children will have an Education, Health and Care plan (EHCP), Individual Development Plan (IDP) or are under assessment.
- Children's primary need will be learning disabilities including, but not limited to, autistic spectrum conditions, moderate to severe learning difficulties and associated needs

As much information as is available will be sought at the point of referral to enable Fitzroy Academy to assess the appropriateness of the provision for the child.



Lydia Swinton (Head Teacher)

The Fitzroy Academy
01939 210040

Mike Pearce (Head of Care)

Curriculum



The Fitzroy Academy has 3 curriculum levels:

- **Pre-formal** – this curriculum is for students working at the early stages of learning, and is based on the EQUALS curriculum. For students aged 14+, the EQUALS Moving On curriculum is used
- **Semi-formal** – this curriculum is for students who are developing skills in more formal learning, but who still need a flexible and sensory based approach
- **Formal** – this curriculum is for students working at primary levels, who are able to engage in subject-specific learning. Students accessing this curriculum take Functional Skills qualifications in Literacy and Numeracy



The curriculum has a shared termly theme which runs across the whole school. Opportunities to embed learning in practical activities and community settings enhance the curriculum offer.

Independence and life skills are also a strong focus across all 3 curriculums, enabling students to learn skills which will support independence and opportunities in adulthood.





Pre-formal and Semi-formal Curriculum

Students working within the pre-formal and semi-formal curriculum have a bespoke curriculum programme, based on the EQUALS curriculum schemes, and enriched by regular opportunities for community participation, life skills and independence.

Students are supported to engage and learn by the use of a total communication approach, including the use of visual schedules, signing and communication aids.

Sensory input and practical learning opportunities enhance the knowledge, understanding and embedding of skills, across a range of settings.

Life skills are delivered on a daily basis, at a level appropriate to the individual needs of each student. Students have repeated opportunities to learn skills in food preparation, shopping and community access, as well as functional Literacy and Numeracy skills.

When students reach the age of 14, they are supported to achieve the ASDAN Personal Progress qualification, covering a range of modules to support skills for adult life.



Lydia Swinton (Head Teacher)

The Fitzroy Academy
01939 210040

Mike Pearce (Head of Care)

The Arts

The Fitzroy Academy is registered to deliver Arts Awards at all levels. Arts Award takes children and young people on a creative journey, exploring the arts world, discovering their potential as artists, developing leadership skills – and gaining a recognised qualification.

Students are supported to participate in a range of creative activities, and develop their creative skills in a range of ways.

Creative Arts form a large part of the curriculum across the school, and students are offered a wide range of opportunities to engage in creative activities. The development of the clay workshop enables all students to access and engage with a range of creative processes.



Sports and outdoor learning

We offer a wide variety of physical activities to develop fine and gross motor skills and social opportunities.

On site we have a full sized gym, equipped for basket ball, indoor football, badminton and trampoline sessions, as well as a sports field that is sized for 2 football pitches.

The school has an outdoor classroom, playground and sensory areas

Students are encouraged to maintain and care for the school environment, through horticulture, garden maintenance and litter picking

We also offer a range of off-site learning opportunities, including activities such as horse riding, swimming and cycling.



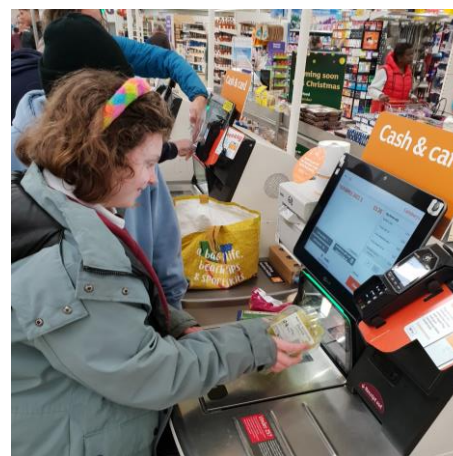
Lydia Swinton (Head Teacher)

The Fitzroy Academy
01939 210040

Mike Pearce (Head of Care)

Careers and Employability Skills

- Learning employability skills and learning about careers is embedded within the curriculum for all students. Individual needs and pathways into adulthood are considered, and students are supported by an Independent Careers Advisor.
- Each student has a 'Preparation for Adulthood' profile, which is updated termly to reflect their interests and wishes for their future.
- Students have termly opportunities to develop employability skills through mini-enterprise projects, workplace visits, and visits from employers. Communication skills are a key feature of the careers offer, in recognition of the communication needs of our students.
- The school runs a weekly tuck shop on-site, which all students are supported to manage and attend. This provides opportunities to practice employability skills and communication in a safe and familiar environment



Education, Care and Health Plans (EHCP) Assessment Overview



The Special Educational Needs Coordinator (SENCo), in conjunction with the Head Teacher and teaching staff, is responsible for ensuring that students EHCP targets are at the forefront of their educational programme.

Students often require additional support with literacy and numeracy will have targeted learning plans including access to an intervention programme designed to increase their functioning levels.

Clinical Interventions

Our Therapy team work closely together and in collaboration with school, parents/carers and other professionals to provide a holistic approach to interventions. Therapy targets are integrated into the school day and embedded into their curriculums.

We involve and inform the parents/carers of children and young people so that we can work together and ensure the best outcomes for all.



Personal, Social, Health and Economic education (PHSE)

PSHE is integral to the curriculum across the school, promoting social communication, personal development, healthy living and an awareness of money and finances, at a level appropriate to individual needs. The PSHE curriculum is based on the PSHE Association's SEND programme of study.

Students learn about their rights and responsibilities, and about being part of a community. They receive important lessons about friendships and relationships, as well as learning about how to keep themselves safe. Students learn about money and participate in practical activities to embed these skills.

Spiritual, Moral, Social and Cultural (SMSC)

The PSHE programme is complemented by our SMSC calendar, providing opportunities throughout the academic year for students to participate in celebratory days, religious celebrations, charity events and awareness days. The SMSC programme enables the whole school to come together and develop social and personal communication skills.



Lydia Swinton (Head Teacher)

The Fitzroy Academy
01939 210040

Mike Pearce (Head of Care)

Key School Information



Bullying and Harassment Statement

The Fitzroy Academy does not tolerate bullying behaviour which is never accepted in school and is never ignored. Bullying is behaviour which is deliberately hurtful and frightening and can include both physical and verbal forms, as well as online bullying. If bullying is suspected or reported it is investigated immediately. It is dealt with appropriately and followed up later to ensure that it has not resumed. Please refer to the anti-bullying policy on the website for further information.

Safeguarding and Child Protection

We take seriously our responsibility to safeguard young people at risk. We have designated safeguarding leads and robust practices in place to ensure pupil safety. Our job means that we are here for any student, parent or member of staff who has a worry about the safety and well-being of a student. We are here to make sure that all children and young people are kept safe from physical or emotional harm both inside and outside of school. Our safeguarding policies can be found on our website.

Pastoral Support

The Fitzroy Academy uses a positive behaviour support approach to enable students to develop skills in self-regulation and co-regulation. Each student has a personal behaviour support plan and risk assessment, to ensure appropriate support and strategies are understood by all staff. These plans are developed with the on-site clinical team and behaviour training team.

Uniform

The Fitzroy Academy has a uniform (details on the website). However, we also recognise that for some students, sensory input from different fabrics and materials can be overwhelming. Therefore we do not insist on the students wearing the uniform if it is going to cause dysregulation.

The School Day

The school day starts at 9.30am and finishes at 3.30pm. Lunch is 12.30 – 13.05pm, and students also have a mid-morning break at 10.50am



Lydia Swinton (Head Teacher)

The Fitzroy Academy
01939 210040

Mike Pearce (Head of Care)



The Fitzroy Academy

Address: Fitzroy Academy Cruckton Shrewsbury Shropshire SY5 8PR

Phone: 01939 210040

Email: enquires@newreflexions.co.uk